

IS MY ORGANIZATION ELIGIBLE?

COVID-19 EMERGENCY RESPONSE SUPPORT FOR COMMUNITY ORGANIZATIONS

This will be delivered through two main program areas:

- 1) **Granting Program for Non-Profits**
- 2) **Preventing Disease Transmission Training & Equipment Program**

Please use this decision tree to help determine which program(s) your organization is eligible to apply for.

See the Guidance Documents for each program for more details.

START HERE

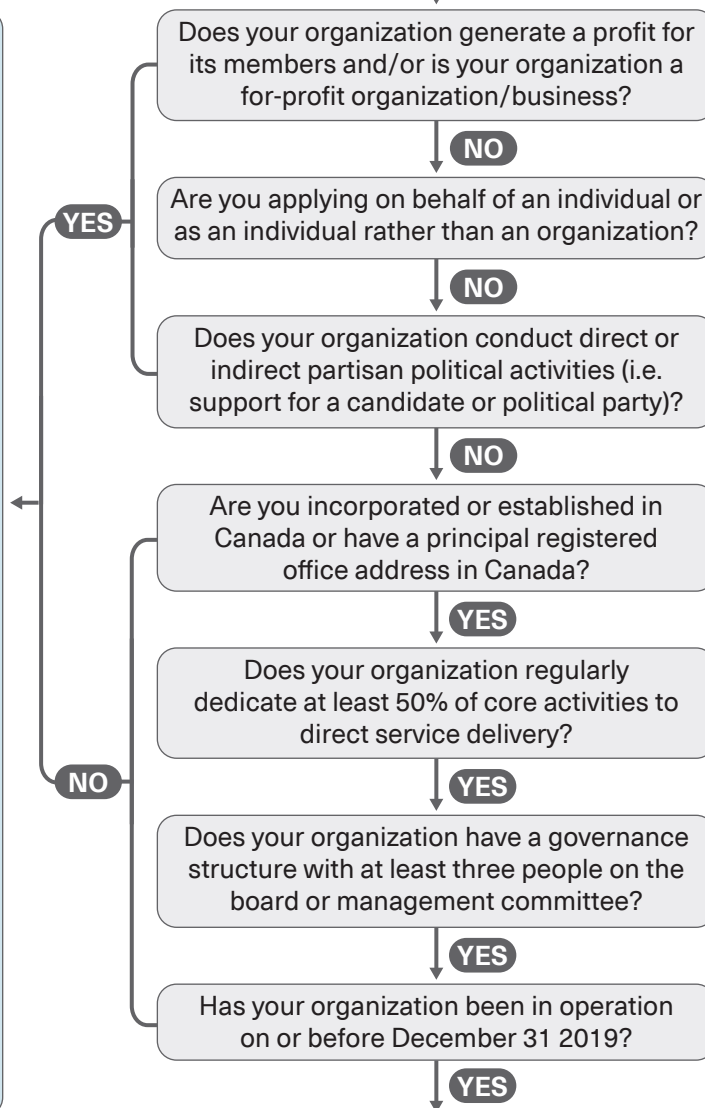
Unfortunately your organization type is not eligible for the Canadian Red Cross **Emergency Support for Community Organizations** program at this time.



If you are interested in Granting Assistance, Preventing Disease Transmission Training and/or Personal Protective Equipment, **please contact us**

HERE

to fill in a short survey so we can better understand the needs of the sector for future programming.



? Questions - See our FAQ: "What is a for-profit organization or business?" and "What is meant by a non-profit?"

? Questions - See our FAQ: "What do you mean by partisan political activities?"

? Questions - See our FAQ: "What does direct service delivery mean?"

? Questions - See our FAQ: "What is meant by a governance structure with at least three people on the board or management committee?"

? Questions - See our FAQ: "Why does it matter how long our organization has been in operation?"

(continued on next page)

(continued)

? Questions - See our FAQ: "What is meant by a non-profit?"

Are you a non-profit?

YES

You are able to apply for the **Granting Program for Non-Profits** and the **Preventing Disease Transmission Training & Equipment Program.**

Are you interested in the **Granting Program for Non-Profits?**

YES

Does your organization have internal accountability measures such as practices and procedures for internal controls and accountability?

YES

! Check the Eligible Activities and the Ineligible Activities in the [Granting Program](#) for Non-Profits Guidance Document before applying.

Are you a registered charity or qualified donee?

YES

You are able to apply for **The Preventing Disease Transmission Training & Equipment Program.**

Are you interested in the **Preventing Disease Transmission Training & Equipment Program?**

YES

Does your organization have internal accountability measures such as practices and procedures for internal controls and accountability?

YES

Does your organization work with clients in low and medium risk environments?

YES

? Questions - See our FAQ: "What is a registered charity?" and "What is a qualified donee?"

? Questions - See our FAQ: "Why is my registered charity not eligible for the Emergency Response Support?"

! Your organization's unrestricted cash reserves will be considered as an indication of financial vulnerability.

? Questions - See our FAQ: "How do I calculate our annual revenue for eligibility and how do I know what to include?" and "How do I calculate the ratio of unrestricted cash to the total annual operating expenditures to understand how my application will be considered?"

? Questions - See our FAQ: "What are medium and low risk environments?"

Please apply [HERE](#)

This program is focused on supporting organizations delivering critical community-based supports to vulnerable populations in Canada, and organizations addressing a pressing social inclusion or wellbeing need. For more guidance please see the Guidance Documents for each program.

! **If you are not eligible** and are interested in Granting Assistance, Preventing Disease Transmission Training and/or Personal Protective Equipment, **please contact us [HERE](#)** to fill in a short survey so we can better understand the needs of the sector for future programming.